



Contractor Safety Bulletin

Immediate Review and Action

Date:
08/01/2019

Topic:
Inspecting Temporary
Pole-Mounted Work
Platforms

Audience:
Electric Line Construction
and Maintenance
personnel involved with
the use of Temporary
Pole-Mounted Work
Platforms

**Document
Contact:**
Tim Bedford

What You Need to Know

An internal evaluation of temporary pole-mounted work platforms is currently being conducted for potential issue with a metal link used on these platforms. These platforms, as well as ladder support attachments made of the same metal, are being tested and evaluated to determine if their performance is adequate for use under real field use conditions. After the testing and evaluation of this equipment is completed, all necessary actions will be taken and communicated to you. In the interim of this testing and evaluation being completed, please be informed of the following information:

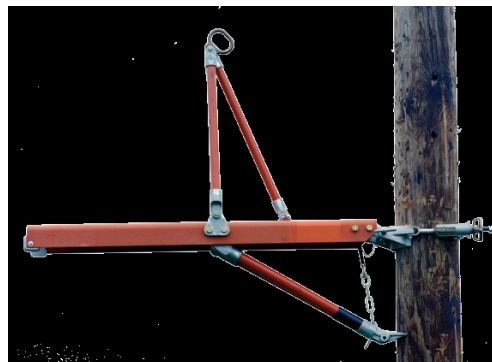
1. **The Maximum Load Rating for all four of the Following Platforms is 500 lb (CHANCE).**
2. **Only one person is allowed on a work platform at any time (Utility Procedure: TD-1002P-06)**



4-ft. CHANCE Epoxiglas® Insulated Platform



6-ft to 12-ft CHANCE Epoxiglas® Insulated Platform



4-ft. CHANCE Standard Aerial Platform



6-ft. to 12-ft CHANCE Standard Aerial Platform



Contractor Safety Bulletin

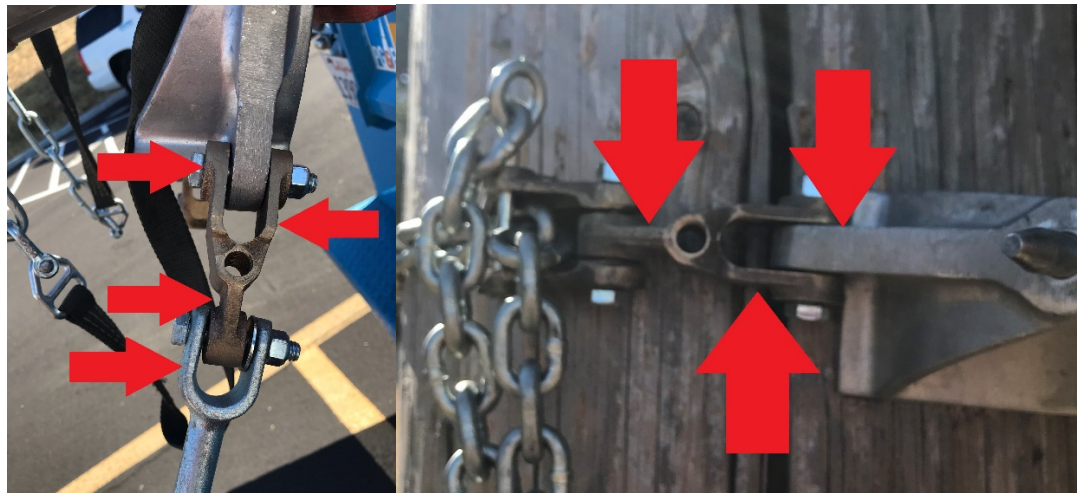
Immediate Review and Action

Immediate Actions

In the interim of the above testing and evaluation being completed, please carry out the following actions:

- Prior to utilizing your temporary pole-mounted work platform, thoroughly inspect the following for cracks, loose bolts, worn, deformed, broken, or missing parts:
 - All components of the tensioning device, including the cast metal support, tensioning device, links bolts and chain.
 - The board and associated supports and pieces

Picture of tension device and areas of focus:



- Perform these inspections prior to every time the platform is utilized. Do not assume that equipment is free of defects.

Required Actions

- Please ensure 100% attachment is utilized when working at heights. Your continued adherence to this expectation provides you with the ability to safely recover from any unexpected conditions while working at heights.
 - 100% attachment means attached to the structure with an approved belt, Lanyard anchor device. Belted off to a ladder or platform in and of its self is not considered 100% attachment. An anchor device and lanyard or fall restraint is required to the structure.
- Please ensure all employees required to perform work from a Temporary Work Platform are trained and familiar with fall restraint requirements and their use prior beginning work.
- Please ensure fall restraint equipment and Temporary Work Platforms are inspected prior to every use and removed from service if in question.
 - If used multiple times a day they are to be inspected each time prior to installation and use.



Contractor Safety Bulletin

Immediate Review and Action