



Developing Your People: A Layered Approach to Leadership

Sunday, September 15, 2019
1:40 PM-2:30 PM

LEADERSHIP WORKSHOP



Jon Finch
Milwaukee Tool

This session is eligible for 1 Continuing Education Hour.

For these hours to appear on your certificate, you must:

- Have your badge scanned at the door
- Attend 90% of this presentation
- Fill out the online evaluation for this session:



LEADERSHIP WORKSHOP 

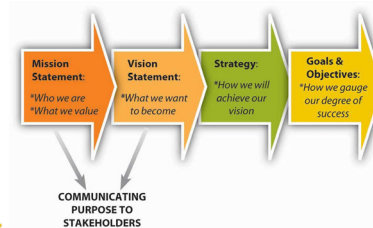
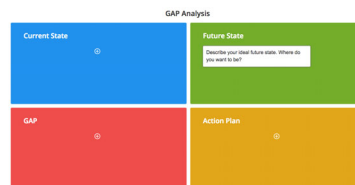
Building your Vision/Mission/Objectives

LEADERSHIP WORKSHOP



V/M/O

- Step 1 – Analyze your current state and organize into SWOT model
- Step 2 – Complete a gap analysis
- Step 3 – Compose a Vision/Mission statement
- Step 4 – Establish objectives (tactics) you can measure that will provide milestones on the path to achieving your Vision/Mission
- Step 5 – Create an operating rhythm to stay on track and measure success



LEADERSHIP WORKSHOP

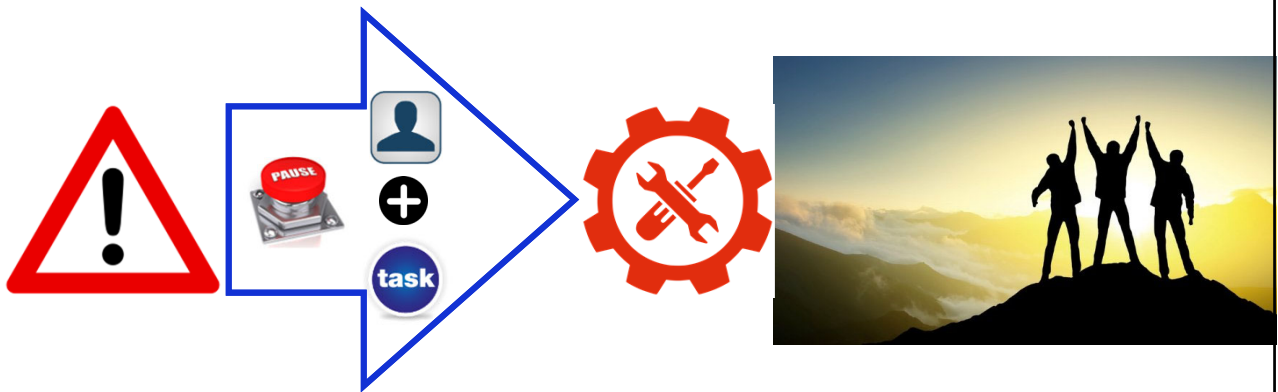


Aligning the people side of your vision

LEADERSHIP WORKSHOP



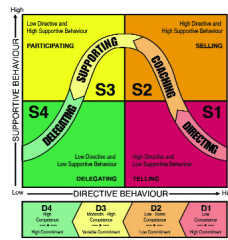
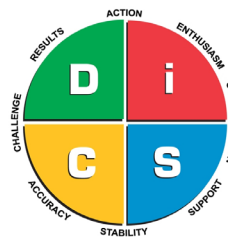
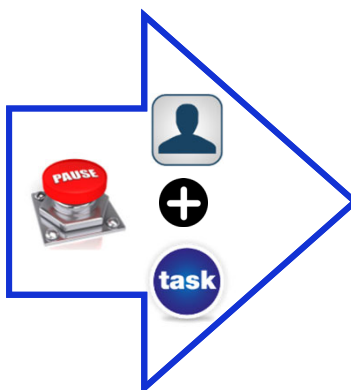
Simplicity of leading others



LEADERSHIP WORKSHOP



Simplicity of leading others



LEADERSHIP WORKSHOP 

Emotional Intelligence

LEADERSHIP WORKSHOP



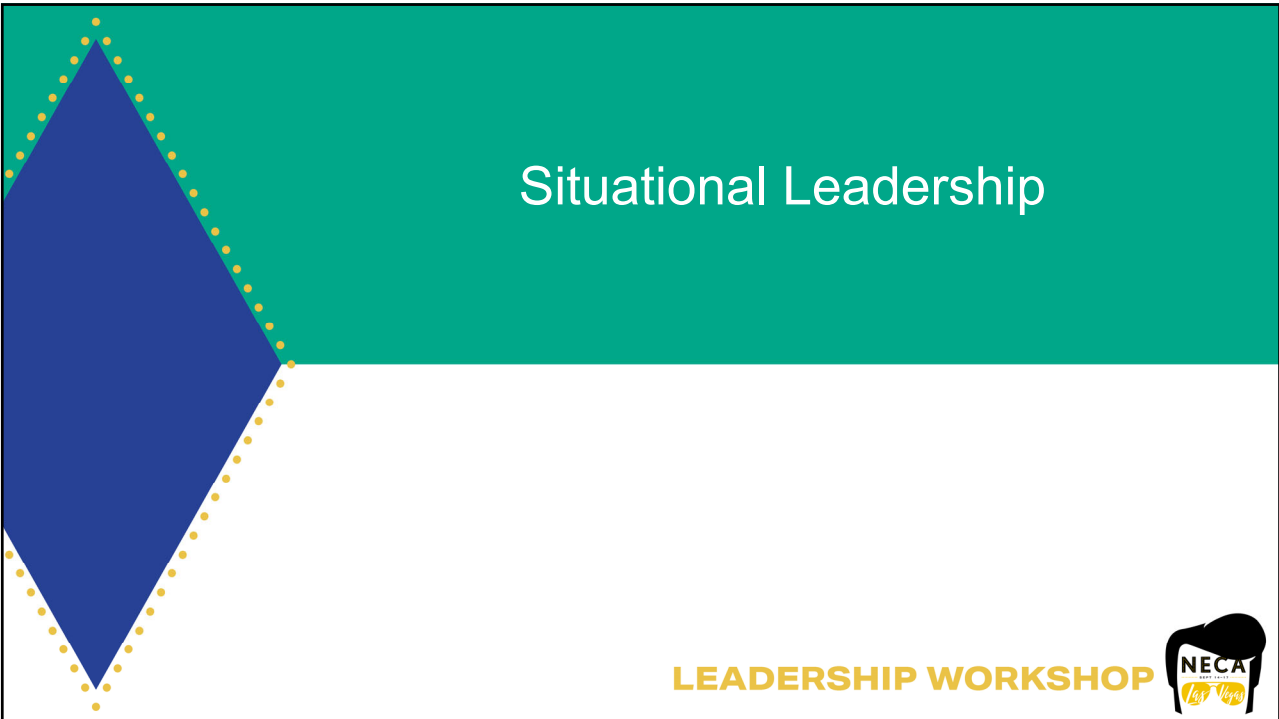
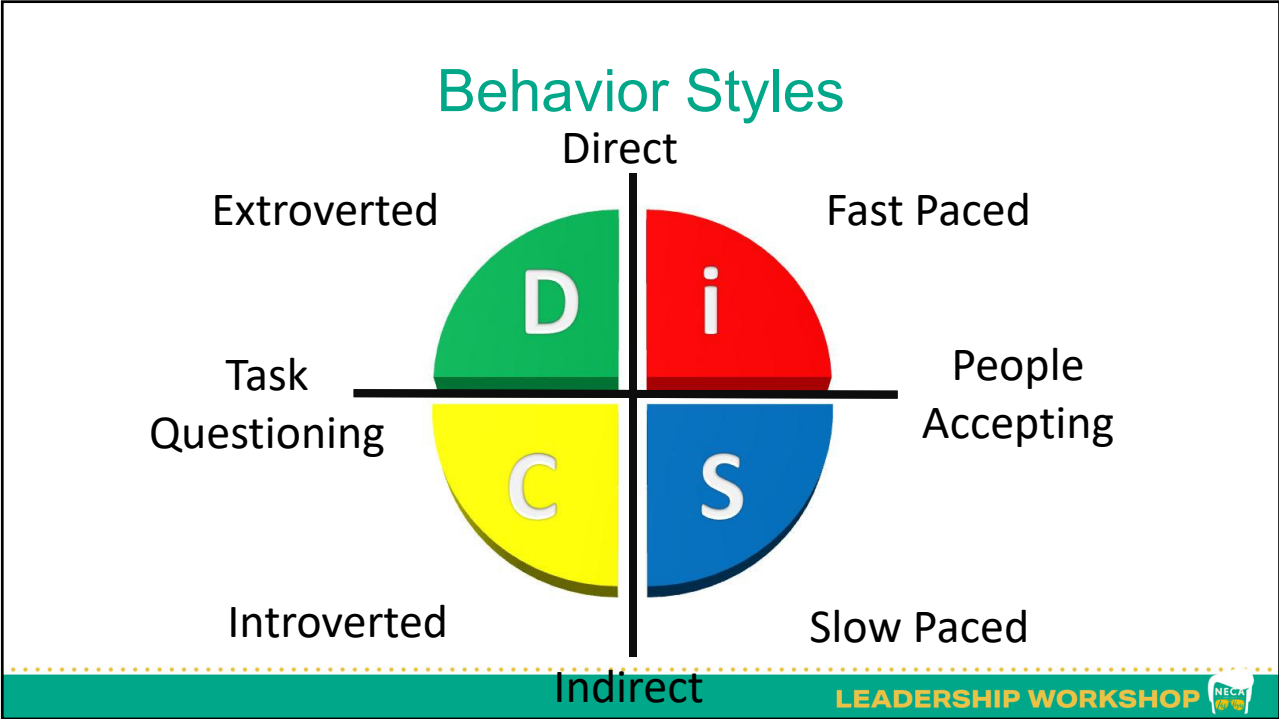
Emotional Intelligence

- **#1** of 33 workplace skills = **58%** of success in all job types
 - TalentSmart
- **85%** of financial success = skills in “human engineering”
 - Carnegie Institute of Technology

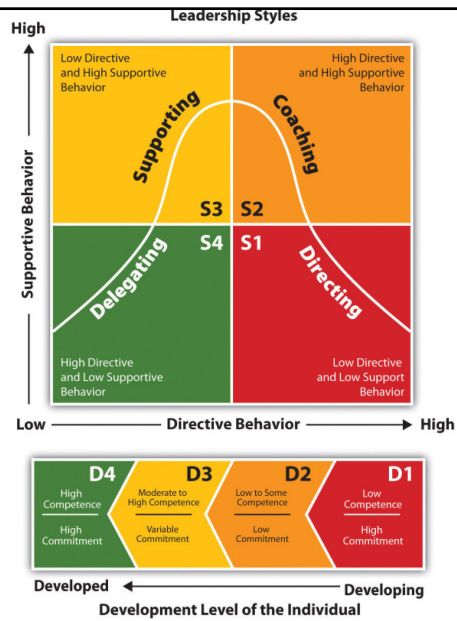
LEADERSHIP WORKSHOP 

Behavior Styles

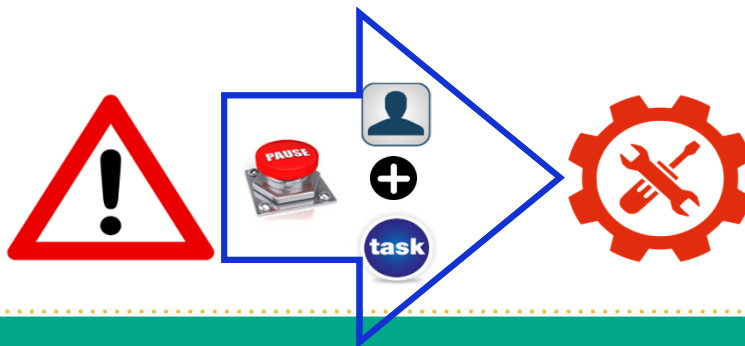
LEADERSHIP WORKSHOP 



Situational Leadership



Leading to Success



Complete the Online Evaluation

For more Information:
Visit us in Booth #2791, 2871



LEADERSHIP WORKSHOP 