



The United States of America

Interesting Facts

	Alaska	lower 49
geography		
land area (square miles)	616,240	3,102,454
ocean area ¹ (square miles)	1,455,613	1,901,178
coastline (miles)	33,904	54,729
glaciated area (sq. mi.)	28,958	266
tidewater glaciers	51	0
peaks higher than 15,000 feet	10	0
historically active volcanoes	53	15
islands larger than 600 square miles	15	4
climate		
hottest ever recorded (°F)	100	134
coldtest ever recorded (°F)	-80	-70
warmest average (°F)	-45.9	78.1
coldest average (°F)	10.1	37.4
wettest average (inches per year)	226.24	379.02
driest average (inches per year)	3.96	3.01
snowiest city ² (inches per year)	303.8	240.3
windiest city ² (yearly average mph)	19.1	13.9
average tornadoes per year	<1	1,300
biology		
grizzly bears	30,000	1,300
bald eagles	60,000	25,000
forested area (square miles)	199,063	824,063
species of poisonous snakes	0	4
demographics		
population	710,231	308,035,307
population density (per square mile)	1.2	99.3
cities over 100,000	1	274
cities over 5,000	12	4,555
males per 100 females	108.5	96.7
<18 years old/64 years old (percent)	26/8	24/13
indigenous people (percent)	15	1
Indian reservations	1	369
US representatives	1	434
infrastructure		
roads (miles)	15,328	4,027,440
railroads (miles)	518	139,173
airports (per 100,000 population)	72	4
rocket launching facilities	2	10
federal lands (percent)	60	19
crop lands (percent)	0.2	18.6
education/lifestyle		
colleges/universities	7	7,000+
adults with college degree (percent)	26.5	24.4
licensed pilots (percent)	1.3	0.2
boat owners (percent)	7.5	4.3
workers with <10 minute commute (percent)	26	14

¹ area from the coast out 200 miles, known as the Exclusive Economic Zone
² city defined as populated place with a city code



Legend

• cities ▲ mountains — great highway — super of highway
 Scale Miles 0 100 200 300 400
 Kilometers 0 100 200 300 400
 © 2011 J.W. Green. All rights reserved. ISBN 978-1-4927-04-4
 Wilderness Publishing Co. 1-800-490-4960
 PO Box 300 publications@wilderness.com
 Fairbanks AK 99707 www.wilderness.com

This Alaska map should be kept in check to the thoughtful treatment of Alaska by many map publishers in placing Alaska in a small box off the west of California on maps of the "United States of America."



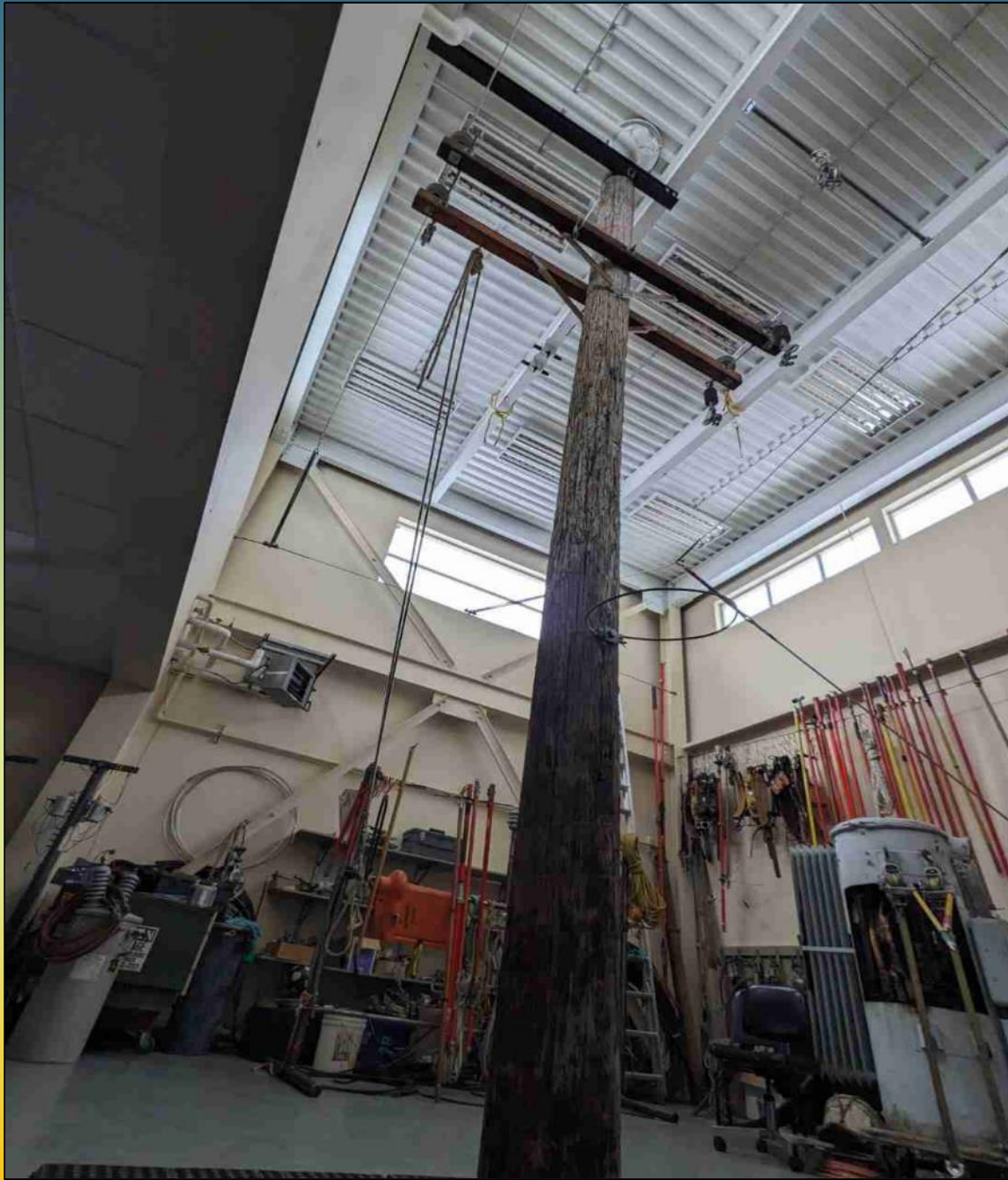
Class Structures

Bootcamp – 0 hours, pre-indenture
10 days in May

1st Year – 2000 hours
8 weeks in April

2nd Year – 4000 hours
8 weeks in February

3rd Year – 7000 hours
8 weeks in November



Our Programs

- Outside Line – Construction and Utility (8,000 hours)
- Outside Telecommunications – Construction and Utility (8,000 hours)
- Tree Trimmers (4,000 hours)
- Inside Programs: Inside Wireman and Inside Telecommunications

2022 Statistics

Lineman – 72

- Bootcamp - 38
- Turned out - 7
- Applicants - 157

Outside Telecommunications - 90

- Turned out 11
- Applicants - 129

Alaska Certificate of Fitness

- State of Alaska licenses linemen.
- Linemen coming to Alaska from out of state must pass state-administered test.
- This has been a barrier preventing linemen from traveling to Alaska for work.
- Alaska Department of Labor recently announced draft regulations to allow the Alaska IBEW/AJEATT to provide its own test.

